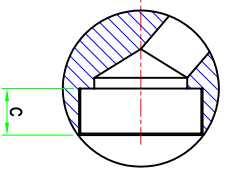


(WE RESERVE THE RIGHT TO CHANGE DESIGN AND TECHNICAL DATA FURNISHED HERE DUE TO CONTINUOUS PRODUCT DEVELOPMENT.)



SCREW END

SIZE	A	B	C	E	F	G	H	J
50	146	146	19.5	61.0	50	36.5	202	61.0
40	140	140	18.5	48.5	43	28.6	195	48.6
25	106	112	17.5	35.0	25	17.5	180	35.0
20	95	85	14.0	27.0	20	12.7	175	27.0
15	87	85	13.5	22.0	15	9.5	165	22.0

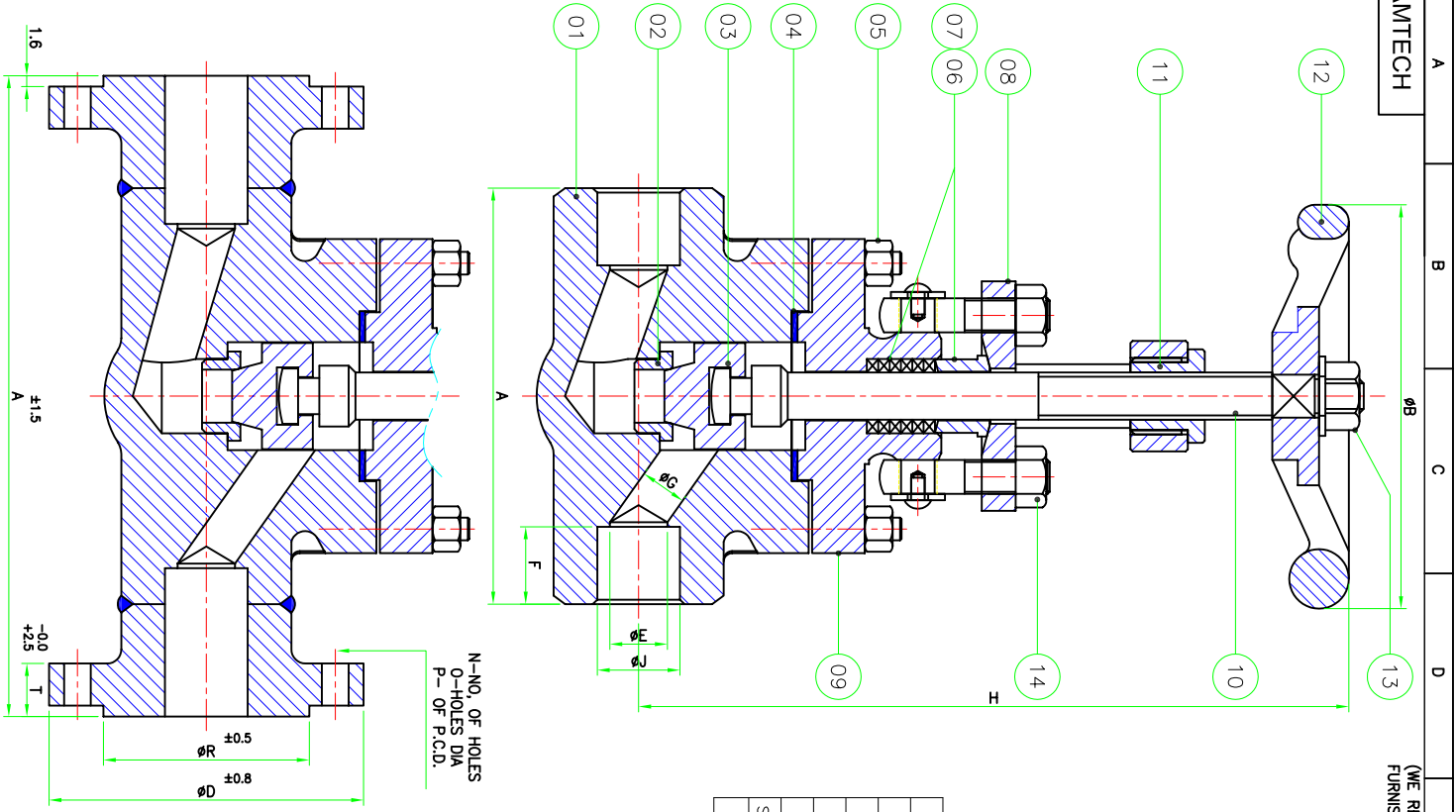
800#

SIZE	A	D	R	P	N	O	T
50	203	152	92	121	04	19	16
40	165	127	73	98	04	16	14
25	127	108	51	79	04	16	14
20	118	98	43	70	04	16	13
15	108	89	35	60	04	16	11

150#

SIZE	A	D	R	P	N	O	T
50	267	165	92	127	08	22	22
40	229	155	73	114	04	19	21
25	203	124	51	89	04	19	17.5
20	178	118	43	83	04	19	16
15	152	95	35	67	04	16	14

300#



N-NO. OF HOLES  
O-HOLES DIA  
P- OF P.C.D.

TECHNICAL DATA

MFG. STD. :- BS 5352/MSS SP 84-1985  
 INSP. STD. :- API 598/BS 6755  
 SOCKET WELD & THD. TO :- ANSI B 16.11/ANSI B 2.1  
 FACE TO FACE :- ANSI B 16.10  
 END CONNECTION :- ANSI B 16.5/BS 1560

PRESSURE TEST (HYDRAULIC):-

150#	BODY :- 32 KG/CM2 (g) SEAT :- 22 KG/CM2 (g) SEAT ( PNEUMATIC ) :- 7 KG/CM2 (g)	BODY :- 80 KG/CM2 (g) SEAT :- 58 KG/CM2 (g) SEAT ( PNEUMATIC ) :- 7 KG/CM2 (g)
------	--	--

800#

800#	BODY :- 211 KG/CM2 (g) SEAT :- 141 KG/CM2 (g) SEAT ( PNEUMATIC ) :- 7 KG/CM2 (g)
------	--

UNSPECIFIED TOLERANCE FOR MACHINED DIM.	DESCRIPTION
0-75	ASLY OF FORGE STEEL GLOBE VALVE
75-300	
300-600	
ABOVE 600	
$\pm 0.2$	
$\pm 0.4$	
$\pm 0.6$	
$\pm 0.75$	

150,300,800 #	15 TO 50 (mm)	ALL DIMENSIONS ARE IN M.M.	MATERIAL
END CONNECTION	STANDARD	UNLESS OTHERWISE SPECIFIED	AS STATED
FLANGED ENDS	BS 5352	REMOVE SHARP CORNERS	DATE

**MANUFACTURERS & EXPORTER**  
**M. KUMAR TECHNOCRATES**  
 SR/9,RAMBHA COMPLEX, ASHRAM ROAD,  
 AHMEDABAD - 380 014,(GUJARAT) INDIA  
 Phone:-0091-79-27540287.  
 Fax:-0091-79-27545519.  
 E-mail:-info@mttechnocrates.com  
 Website:-http://www.mtktechnocrates.com

SCALE	N.T.S.	GHV	DATE
VALVE TYPE			
GLOBE VALVE			
PROJECTION			
THIRD ANGLE			
SHEET No.		DRW. No.	
01 OF 01		AMTECH	
		REV.	00